

Orkin Fly Program Stop Flies From Putting Your Business At Risk

Why Do You Need Orkin's Systematic Fly Control Program?

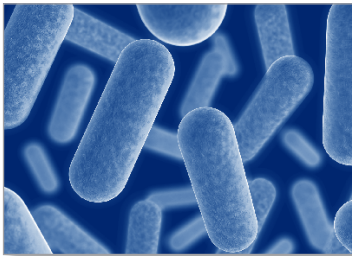
Flies threaten more than just your business. From breeding sites to entry points to actual elimination, Orkin's Fly Control Program effectively deals with fly infestations at all levels.



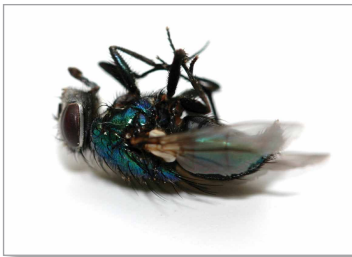
- **Breed quickly.** A female fly can lay hundreds of eggs within a few days after hatching. Those eggs will hatch between 12 and 24 hours. The resulting maggots begin feeding immediately.



- **Contaminate food.** Flies move from rotting, disease-laden garbage to exposed food and surfaces.



- **Spread disease.** Flies transmit pathogenic micro organisms that cause E. coli, salmonella and shingles.



- **Undermine your image.** Flies leave behind droppings, regurgitated food and pathogens when they land, causing customers to form an unsanitary image of your business.



- **Cost money.** Flies are responsible for loss of customers as well as regulatory fines from government agencies.

Customization

Because every business and every situation is unique, there is no single fly treatment that will work in all cases. Your Orkin Commercial Pest Specialist will customize your fly treatment to your business.



- **Inspection.** On the initial visit, your Orkin Commercial Pest Specialist will carefully inspect your facility for potential breeding sites, access areas and possible attractants for flying insects.
- **Identification.** There are just as many flies as there are treatments: House, Phorid/Humpbacked, Drain, Fruit and Blow Fly. We will identify the kind of flies you have before starting any treatment.
- **Sanitation.** Flies thrive in warm, moist conditions. We will establish a complete sanitation program to keep flies to a minimum.
- **Exclusion.** To prevent flies from entering, your Orkin Commercial Pest Specialist will recommend sealing and caulking any cracks or crevices. Dual doors, vestibules and air curtains may also be a consideration.
- **Mechanical control.** State-of-the-art Insect Light Traps (ILTs), may be installed to provide 24-hour protection. With different types of decorative and industrial lights, ILTs fit into any setting and are safe to use in both food and customer areas.
- **Chemical control.** As a last resort, optional chemical controls may be used – such as baits, liquid residuals, wettable powders and fogging.

Ongoing Monitoring and Maintenance

Your Orkin Commercial Pest Specialist will continue to monitor and adjust your treatment program as necessary. This includes ongoing inspections of your entire property, replacement of ILT bulbs and glue boards, and the monitoring of all other controls.

Contact Orkin for a **FREE** consultation today.

